

Energy Manager Software

Building Sustainability & Compliance



SystemsLink



STROMA™

www.stroma.com

Energy Manager Software

SystemsLink Energy Manager Software provides an easy, flexible and cost-effective way of implementing an energy monitoring and targeting system.

It allows any organisation to determine energy usage, identify areas of wastage or overspend, implement improvement strategies, set realistic targets and monitor progress. This can deliver significant energy savings and thus, financial benefits. It can also be used as a springboard for Carbon Reduction Commitment (CRC) compliance.



AUTHORISED USER: NO. 00210

The SystemsLink Package has been approved and added to the Energy Technology List as part of The Enhanced Capital Allowance (ECA) scheme maintained by The Carbon Trust.



Suitable for everybody

The SystemsLink Energy Manager Software is designed to provide an extremely cost-effective way of implementing a fully featured energy monitoring and targeting system. It requires no great level of expertise in use or in analysis and is suitable for every organisation wishing to monitor and therefore control energy usage.

Monitor all your utilities

Electricity, gas, water, oil, solid fuel or any other utility may be monitored using the system. Monitoring allows you to easily identify areas of wastage or overspend and track the savings that you are making.

Easy data input

Data input may be manual or automatic. EDI, spreadsheets and web download files provided by your supplier may be automatically imported using the wide range of import routines available. Full data validation is provided for both manual and automatic data entry. Tolerance checks highlight where invoices may be in error or where usage or cost varies significantly from past performance. Half-hourly profile data may also be imported from BEMs, web downloads and data loggers.

Full range of analysis

The package covers all of the fundamental analyses required for Monitoring and Targeting including:

- Trend analysis and comparison with previous performance.
- Comparison with targets or benchmarks.
- Ranking of sites according to performance.

At a more advanced level, the software also incorporates CUSUM, regression-analysis and degree-day adjustment methods to provide closer monitoring of waste and savings.

High quality reports

A comprehensive library is provided to cover all standard reporting requirements. All reports are designed to show results clearly and to a high standard of presentation, allowing you to get your message across. These reports may be seamlessly exported to Excel for further analysis, or printed by batch.

Custom Reports

A custom reports feature is included to address special data presentation requirements. These reports may be created by the user or provided by Stroma. Configuration is easy, with a knowledge of Excel being the only requirement.

Web reporting

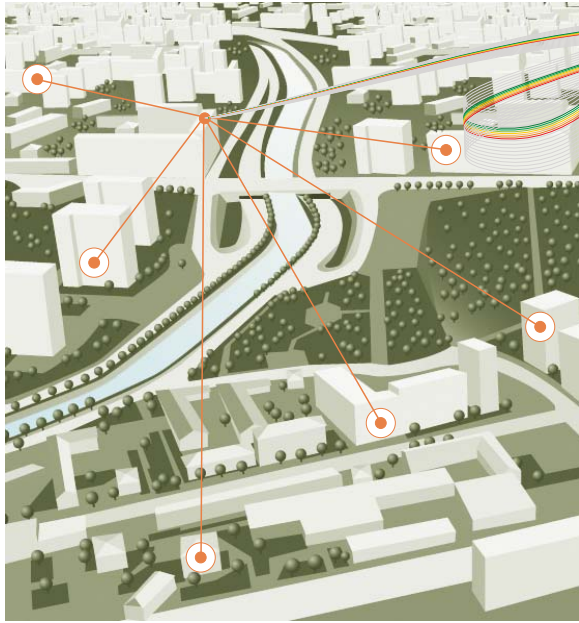
This facility allows users to enter their own meter readings and run reports over the Internet. This is extremely useful where cards, faxes or emails currently have to be submitted with readings. Using this interface, individual sites (e.g. schools, depots, stores) have direct access to their data.

Distribute by e-mail

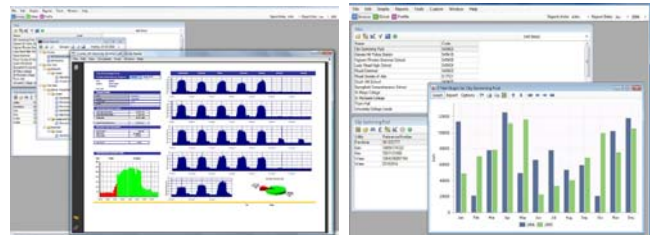
Reports may be sent out automatically by email in Excel format, saving time and effort, and prompting quick corrective action in the case of faults.

Easy access to data and interoperability

The software may be used with either a Microsoft Access or SQL-server database engine providing a high degree of flexibility for further data manipulation by any of the standard Windows packages (e.g. Excel or Word).



Independent research has shown that monitoring and targeting the use of utilities can help achieve savings of between 5% and 10% of annual costs. In some cases savings of 25% can be expected through the continued application of these techniques.



Database

- Unlimited number of sites, accounts, meters and readings.
- Database stores invoice, direct readings or profile (e.g. 30 minute) data. This allows easy comparison between different sources of data, essential for verifying accuracy.
- Sites, accounts and meters may be grouped to provide analysis on specific areas. In addition, virtual groups may be created to analyse on a combination of meters (e.g. 90% of Meter 1 + 45% Meter 2 + ...).
- Site details include site name, code, address, contact details (names of people on site), notes and up to 10 user configurable fields. By default the first four of these are set to floor area, volume, occupancy and population. Reports based on these figures (e.g. Usage per Floor Area) provide a normalised performance comparison between sites.
- Communication log of all conversations and queries with supplier relating to site, account or invoice,
- Account and meter details include supplier, reference, MPAN, M number, targets, tariff, VAT rate, notes and configurable fields.
- Data entry screens include all relevant fields on the supplier invoice. Notes may also be recorded of specific invoice issues.
- Batch numbers allow all invoices (or direct readings) entered manually or automatically to be analysed and validated at a later date.
- Monthly degree-day information for the 17 designated areas of the British Isles may be used to provide degree-day adjustment to heating fuel usage data. Degree-days are automatically downloaded from the SystemsLink web site.

Graphs and Reports

Stroma can produce bespoke reports, through a custom SQL facility, to suit your requirements. The following graphs and reports are provided as standard:

- 1, 2 and 4 year comparisons. Data may be compared up to 8 years previously. Degree-day adjustment may be used on heating fuels. Data accrual allows estimates when data is unavailable.
 - Targeting and budgeting.
 - Regression analysis.
 - CUSUM.
 - All graphs and reports display usage, cost or Carbon Dioxide figures.
 - Specific energy ratio. Displays energy usage per unit of driver variable. e.g. kWh per barrel of beer.
- 30 minute day on day, week on week and month.

All these reports provide output in a graphical and tabular A4 style report.

Additional reports may be easily configured by the user in Excel (or Access) and added to the reports library.

Around 50 reports are provided as standard to cover the majority of user requirements. A custom SQL facility allows additional reports to be easily added for specific requirements. In most cases, where a user requests a specific report, a member of our staff will develop and forward it by email. The report is then added to the reports library so as to be available to other users in the future.

We are confident, especially with our custom SQL facility, that any required report may be generated from the stored data.

Energy Manager Software



Product Details

The following information is by no means exhaustive so please contact Stroma to enquire further.

- Software provided on CD
- Installation provided by trained experts
- Comprehensive on-line help system within the software
- Phone and e-mail support
- Software updates

Contract Analysis

Based on offers the package provides analysis to evaluate the best price. The offers are simply pasted into a spreadsheet structure as they arrive from the supplier and quickly evaluated. A full library of use of system and loss adjustment figures for all regions allows all types of electricity contract to be evaluated. All reports may be configured to user requirements and the whole system has been designed for ease and speed of use.

Maintenance and Support

Telephone and email help services are available free of charge within the first year from date of purchase of the software. In addition, software updates are available either by CD, email or web download. SystemsLink's web site user area details modifications made in the updates and allows download as and when required.

Users are able to make suggestions for future developments and vote on other users' ideas. These are pooled with other users' comments and suggestions to form the major part of our software update process. After the first 12 months, an annual subscription continues the maintenance and support service for subsequent years.

Payment is entirely optional and, should the service not be taken, the current software version may continue to be used indefinitely.

Training

Training on-site is available at the time of installation or at any future date. Further training is normally only required when new members of staff are appointed. Upgrades to the package are accompanied with notes and a comprehensive help file. Additional training is rarely required at this point.

Stroma also offers Operational Rating Toolkit (ORT) - an approved DECI/Advisory Report programme, and the training and certification to compliment it.

Historic Data

Where an existing database or monitoring and targeting system is being replaced, historic data can be recovered to populate the energy manager database. Our staff have a wide range of experience transferring data from both simple and complex systems. In certain situations this can be performed free of charge, but where a charge is necessary this is quoted at the outset.

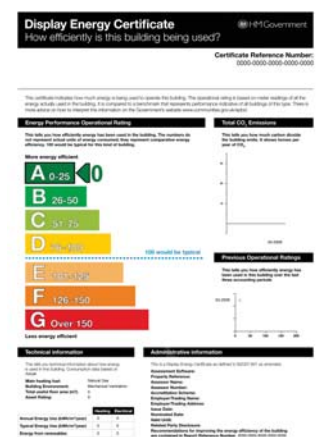
In addition, a starting database can be created from historic supplier EDI or text files.

Energy Performance Legislation

As legislation drives accountability for the energy efficiency of buildings, the introduction of Energy Performance and Display Energy Certificates/accompanying Advisory Reports were introduced as part of the Energy Performance of Buildings Directive (EPBD).

The DEC scheme is expected to have a huge impact. League tables for local authorities energy efficiency will likely be introduced much in same way as tables for school performance have been.

Stroma Certification is approved by the Department for Communities and Local Government (CLG) to provide the training and certification for assessors wishing to produce DEC's.



In exclusive partnership with SystemsLink, Stroma are providing DEC software named OR Toolkit a DEC software which forms part of a fully featured 'Energy Manager Software' package that monitors and targets energy use on multiple properties.

DEC Training and Certification

To become a member of Stroma Certification, undertake our diploma in Display Energy Certificates - Level 3 (DipDEC)

Candidates have 2 course options available:

A, 3 day standalone training course covering:

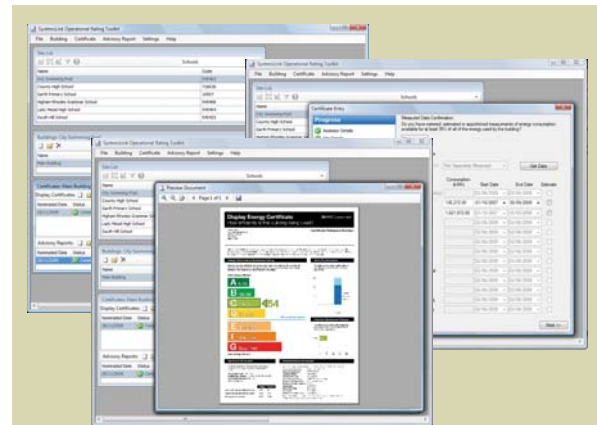
- National Occupational Standards (NOS)
- Mechanical and electrical building services associated with the production of DEC's
- Use of the Government-approved software tool, including entry of actual building data

B, 1 day add-on to the Diploma in Non-Domestic Energy Assessment Level 3:

- Top-up module on the use of the Government approved software tool, including entry of actual building data

On completion of the training, candidates sit an exam and submit a portfolio of 3 DEC's with all supporting information for assessment.

For experienced candidates possessing the skills required to undertake DEC assessments and compile Advisory Reports, there is a fast track option APEL. (Accreditation of Prior Experiential Learning)



Stroma are offering 'OR Toolkit' FREE of charge to all accreditation members.

Independent research has shown that monitoring and targeting the use of utilities can help achieve savings between 5% and 10% of annual costs.

In some cases savings of 25% can be expected through the continued application of these techniques

Operational Rating Toolkit (OR Toolkit)

A powerful tool for the production of Display Energy Certificates and Advisory Reports. As standalone DEC software, the SystemsLink OR Toolkit allows the user multiple benefits over conventional DEC packages:

- Site, building and project database allowing ease of navigation through existing records and storage of existing building information allowing second year certificates to be produced easily.
- User profiles can be created storing the certified assessors information.
- Visual progress bars showing which sections are completed.
- Automated lodgement through the Stroma web services to Landmark.
- Customised portfolio analysis, including carbon foot-printing and performance league tables.
- Phone and Email Technical Support from the Stroma Certification Help Desk.

A comprehensive on-line help system is provided with the software. The package has been designed to make the whole process of monitoring and targeting as easy as possible.

Easy Automatic Lodgement

By using the SystemsLink – OR Toolkit software, the certified energy assessor can link directly to Stroma Certification's lodgement process removing the need for manual data upload, benefiting from improved speed and accuracy of DEC data processing.

Remove the Annual Data Collation Requirement

Combine the Systems Link – OR Toolkit with the Energy Manager Suite, allowing seamless transition of consumption data from the point of use into the DEC format.



SystemsLink and consultancy with Stroma

Stroma is the exclusive partnering consultant of SystemsLink and can provide specialist services to ensure that an organisation uses monitoring and targeting software to its full potential.

Energy Management and Carbon Reduction Consultancy

Stroma offers a range of key consultancy services for energy management, carbon reduction and the feasibility of renewable energy technologies.

Our multi-disciplinary team of consultants can guide organisations through the mechanisms of CRC compliance and data submission as a minimum, but can also formulate a bespoke strategy for reducing CO₂ emissions incorporating all, or a combination of, the following: due diligence energy reports, feasibility studies, energy audits, CO₂ emissions forecasting, life cycle costing and condition surveys.



Our team of highly-skilled consultants offers:

- SystemsLink Energy Manager and OR Toolkit set-up and installation
- Training for personnel in the use of Energy Manager and OR Toolkit
- Remote energy management (historical and ongoing)
- Unique reporting mechanisms tailored to specific requirements
- Historic energy and emissions benchmarking for entire property portfolios
- Error reporting against invoices

Complimentary services for reducing energy usage and CO₂ emissions, including:

- Energy audits and surveys
- Dynamic simulation modelling (DSM) of predicted energy performance
- Simulation of potential improvement scenarios or low to zero carbon technologies
- Carbon impact studies for the CRC
- CRC compliance strategies
- Feasibility studies and reports
- ENE7 Code for Sustainable Homes (CSH) energy feasibility studies and reports
- Production of Energy Performance Certificates (EPCs) and Display Energy Certificates (DECs)
- Energy saving awareness training for key personnel

Stroma has extensive experience in carrying out the CO₂ emission calculations required to demonstrate compliance with Building Regulation Parts L1A and L2A.

Current clients include large national property consultants and managers, local authorities and M&E consultants.

We are also one of the UK's largest providers of Energy Performance Certificates (EPCs) and Display Energy Certificates (DECs). Moreover, our in-house assessors can offer advice and assistance for implementing the energy-saving measures outlined in the Recommendation Report.



Sustainable Design

Stroma Design is a RIBA Chartered Architectural Practice delivering innovative solutions where compliance was previously deemed a financial obstacle, irreconcilable with quality design.

In addition to a traditional architectural service, based on the RIBA work stages, we offer strategic advice and assessments for the Code for Sustainable Homes (CSH) or BREEAM.

Our consultancy services include assessment of existing building stock, guidance on environmental sustainability issues, assistance with specification of renewable technologies and design reviews and workshops.

Though not exclusive to a specific sector, we have worked with various housing associations and contractors to amass considerable expertise in the provision of social housing.

Consequently, we understand the financial and design constraints that inform the process and how best to negotiate them technically.



Stroma has recently been appointed by the Technology Strategy Board (TSB) to act as leading consultant for several envelope retrofit projects.

In particular, Stroma will address the energy efficiency of existing housing stock and develop bespoke improvement strategies for meeting government CO2 emission targets.

Compliance Testing and Consultancy

Leading UKAS accredited testing body Stroma offers support for compliance with Building Regulation Parts L and E through all forms of compliance testing: air leakage, acoustic & sound insulation, thermography, room integrity and co-heat.

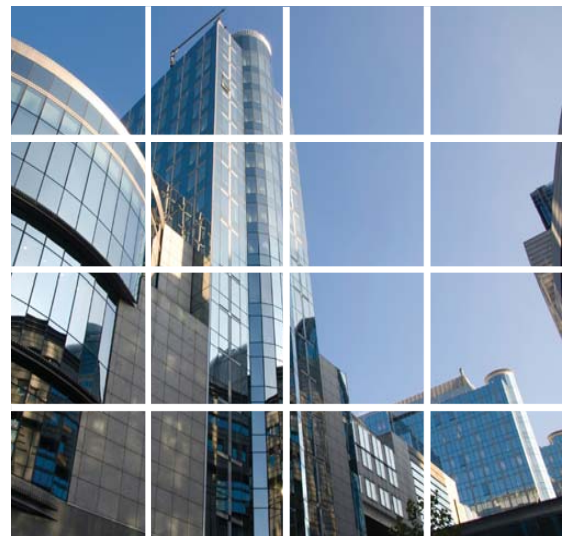
Our preferred approach is to participate from the outset, ensuring that compliance is considered at design stage and therefore achieved comfortably and economically. Having provided testing and consultancy for over 5,000 developments, from office and multi-purpose buildings to educational establishments and cinemas, we are experts in Building Regulations compliance. By analysing proposed construction details and offering practical advice, we frequently play a crucial role in securing a satisfactory test outcome.

In the event of test failure, we conduct a survey of the building to identify the main problem areas; our contracting division can then carry out the remedial works necessary to achieve the required specification. Stroma Contracting specialises in passive fire protection, fire stopping, thermal insulation, acoustic sealing and air sealing.



Operating throughout the UK and Ireland and with an impressive client portfolio including government bodies, housing associations, local authorities and major property consultants, Stroma is ideally placed to identify and deliver the optimal planned or remedial measures for meeting energy efficiency targets in the public sector.

We can prepare a bespoke proposal, drawing on the expertise and experience available from the relevant divisions within the Stroma group. It is this unique, customer-focused approach – together with responsive turnarounds and highly competitive rates – which makes us a preferred supplier of many leading organisations in the commercial, residential and public sectors.



Energy Manager Software

Building Sustainability & Compliance

"Stroma's ultimate objective is to ensure that all buildings, new and existing, reach their full energy performance potential and comply with legislation without sacrificing client satisfaction or occupier comfort"

Discover more about Stroma by visiting www.stroma.com.



AUTHORISED USER: NO. 00210

The SystemsLink Package has been approved and added to the Energy Technology List as part of The Enhanced Capital Allowance (ECA) scheme maintained by The Carbon Trust.

Stroma, Pioneer Way, Castleford, WF10 5QU
0845 621 11 11, email info@stroma.com.



SystemsLink



STROMA™

www.stroma.com