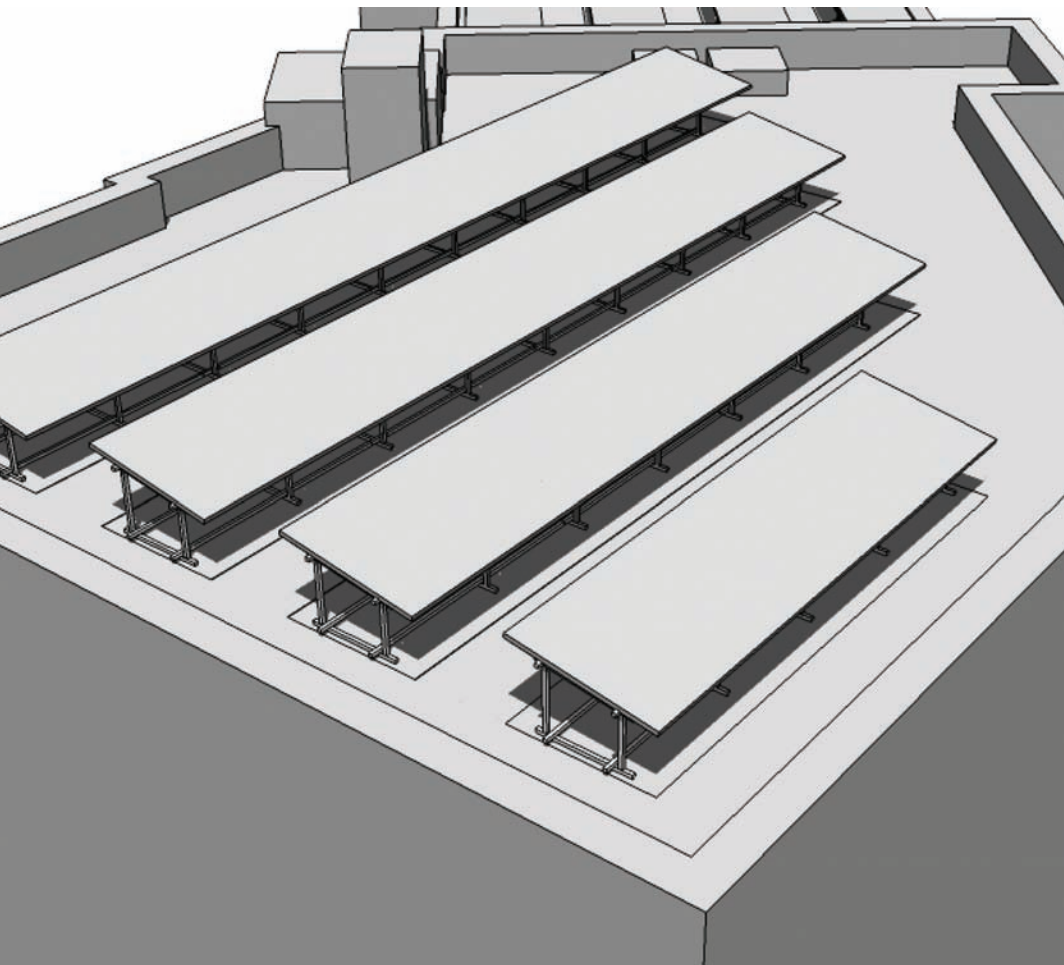


# PV Mounting Solutions



Tailor-made innovative solutions to meet every application



**STROMA**<sup>®</sup>  
SOLAR

[www.stroma-solar.co.uk](http://www.stroma-solar.co.uk)

---

## Bespoke Mounting Solutions

Stroma Solar operate a solar photovoltaic (PV) system design and installation service.

Due to variances in installation opportunities, Stroma Solar additionally offer bespoke mounting solutions for integrating in to residential and commercial markets.

Stroma Solar's mounting systems use Unistrut®, a time proven reliable product that is used widely in the mechanical and electrical contracting sector and with considerable knowledge Stroma can utilise its strengths for providing clients with a mounting system designed to meet tailor-made specifications.



- Bespoke Design
- Supply
- Installation
- Maintenance & Monitoring

## Free Standing Ballasted Systems

For use on flat roof and ground mounted installations these systems are robust and hard wearing with an unrivalled lifespan. Highly adaptable they can be adjusted to almost any height and inclination which offers clients more freedom.

Traditionally ballasted using approved products; this system requires no mechanical fixing to the roof structure therefore avoiding the potential issue of water egress. Cable management systems can also be integrated which increases safety in installation areas.

## Façade Systems

Whether you want to make a statement with your new solar system or have limited suitable roof space, Stroma locates innovative areas to install the PV system which would not compromise efficiency or the aesthetics of the building.

The façade system is suitable for a variety of structures ranging from commercial warehousing to residential properties, providing flexibility and can make a positive visual impact on how people foresee you and your company.

## Framing systems

Unistrut® products form the platform of our mounting systems. With over 65 years of experience in their field they are a truly reliable source supported by research and development. The systems are nationally available with a vast array of supports, fixings and additional products which have been utilised by the construction industry across a broad range of fields.

Stroma has adapted these products for use with our solar systems. By designing and manufacturing our own tailor-made components Stroma now have the ability to install a PV system in almost any location.



## System Design

To make sure systems are efficient, Stroma incorporate complex and thorough shading analysis assessments to ensure you get the most from your investment. 3D CAD modelling is used to provide precise data specific to the installation area, generation estimates are provided by national calculation methodologies to confirm the output figures are substantiated.

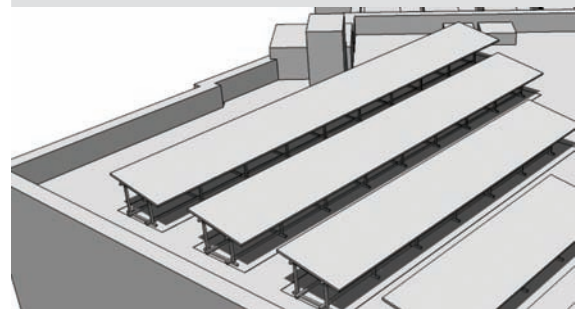
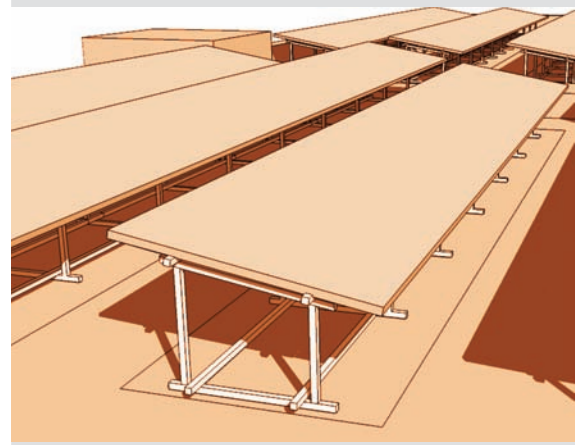
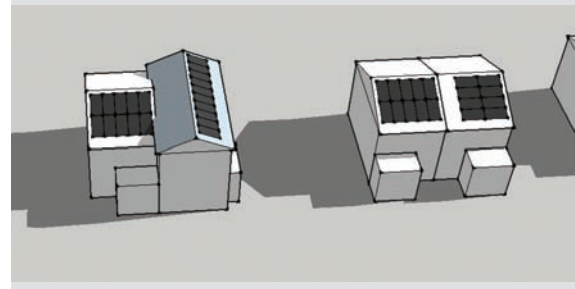
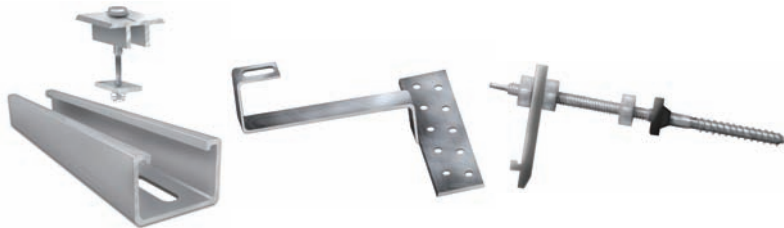
With PV systems being a long term investment Stroma ensure all components will last above and beyond what is required. The same high quality components are used in all our systems and all parts are protected to EN ISO 14713:1999 or EN 10088.

To warrant what we have designed and recommended is as good as it can be, we have all our bespoke mounting systems independently tested and verified.

This demonstrates that systems meet current regulations and standards such as BS 6399, which require precise dead load and wind loading data to verify the system structural capabilities and security.

## Standard Domestic Systems

Not all installations require a fully bespoke solution Stroma additionally have a range of mounting systems which are predesigned and qualified. For general residential and light commercial use these offer the same engineering guarantees as the bespoke systems but with fewer design options available.



If you are interested in a renewable technology solution for your property, please contact your Stroma Solar and arrange a no obligation survey free of charge to determine your requirements and suitability.



Please also visit [www.stroma-solar.co.uk](http://www.stroma-solar.co.uk) for further information.



For further information please contact the Stroma Solar team on **0845 621 11 16** or email [solar@stroma.com](mailto:solar@stroma.com)

**Stroma Solar Distribution Centres:**

Bristol

South London

South Yorkshire

West Yorkshire (Head Office)

Stroma Head Office

Pioneer Way, Castleford, West Yorkshire, WF10 5QU

