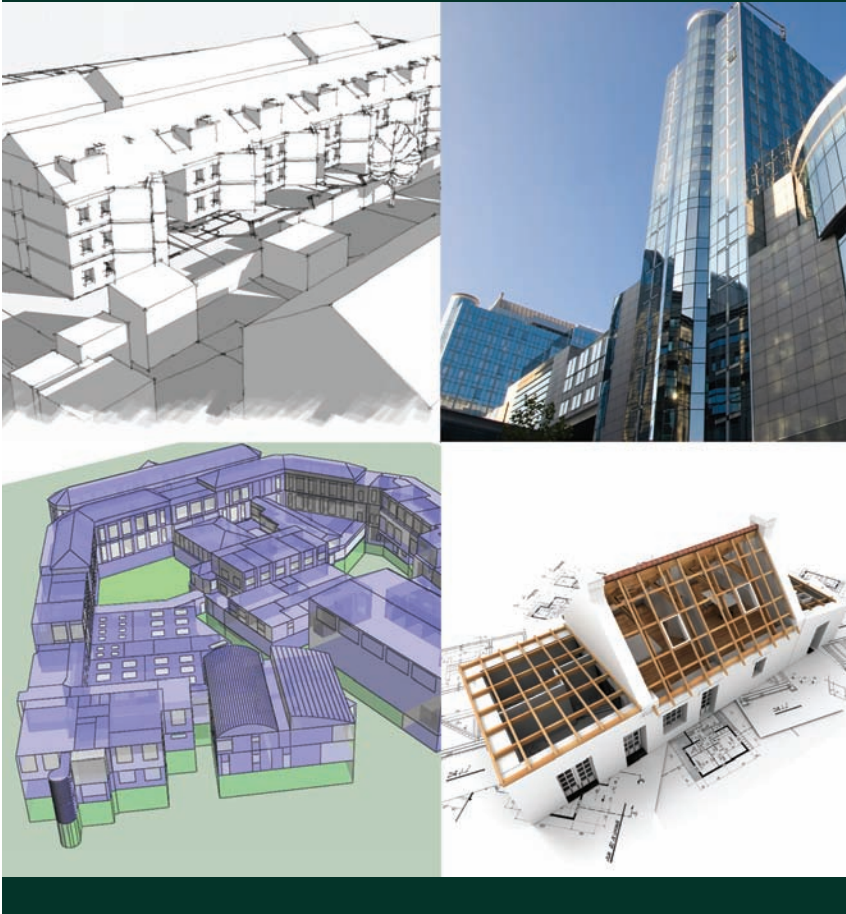


STROMA

*An integrated solution to
Part L & Part E testing and
compliance services*



STROMA[®]
TECHNOLOGY

www.stroma.com

Stroma's co-ordinated approach to **building sustainability and compliance** services, pertinent to the RIBA work stage sequence.

Compliance with the new Part L1A and L2A for new built residential and non residential buildings

The changes to Building Regulations Part L, which took effect on 1st October 2010, will mean more stringent compliance requirements for new developments seeking planning consent.

The goalposts will shift for everyone as confidence factors have significantly changed; Compliance now rests on holistic energy-efficient solutions rather than 'greenwashing' through bolt-on renewable technologies.

Stroma is a multi-disciplinary construction services company

Collectively, the group adopts a co-ordinated approach to building sustainability and compliance, identifying and implementing the optimal planned or remedial measures for meeting energy performance targets and compliance requirements across the residential, commercial and public sectors.

RIBA WORK STAGE	PREPARATION		DESIGN		
	A	B	C	D	E
BREEAM / Code for Sustainable Homes Environmental Assessment Tool for efficiency and sustainability	CPD seminar and introductory advice		Pre-assessment and advice		
Energy and CO₂ Emission Calculations Part L compliance, Dynamic Simulation Modelling, assistance	Preliminary assessment and advice Basic modelling of energy performance and solar gains in order to help establish suitability of clients brief		Design stage compliance - criterion 1 Development of CO ₂ emissions calculations (SAP/SBEM) for submission with planning and mandatory building regulations pre-start. May include a number of iterations to help to establish cost effective, compliant design		
Solar Gains and Thermal Comfort Calculations	Preliminary assessment and advice Solar gains assessment in conjunction with CO ₂ emissions compliance to help impact of client's requirements		Design stage compliance - criterion 3 Solar gains compliance calculations in line with Part L2 Building Regulations, in conjunction with criterion 1 calculations for submission with planning		
LZC & Renewable Energy Feasibility studies, renewable energy statements, design and integration consultancy			LZC cost effectiveness and funding assessments In addition to assessing the feasibility of systems, incentives such as FIT's and RHI allow potential revenue streams from renewable technologies		
			Renewable energy statement Assessment of the suitable LZC technologies available to meet any planning requirements for on site generation of power or CO ₂ emissions reduction through renewable technologies		
Air-Tightness & Air Sealing Design advice, testing, remedial work	Air-Tightness overview CPD seminars to raise awareness of air-tightness issues		Design review and workshops In depth review of building air-tightness detailing and strategy including workshops with design team to highlight areas of improvement and to assist in improving cost effectiveness of solutions		
Thermal Bridge (PSI) Ψ Value Calculations			Finite Element Analysis (FEA) thermal bridges Calculation of thermal bridge linear transmittance to assist Criterion1 compliance calculations (SAP/SBEM)		
Daylight Calculations			Daylight calculations Daylighting calculations using DSM to assist with building design, in conjunction with criterion 3 compliance and BREEAM		
Acoustic Testing Design advice consultancy and testing	Acoustics overview CPD seminars to raise awareness of acoustic issues		Design review and workshops In depth review of building acoustic detailing and strategy including workshops with design team to highlight areas of improvement and to assist in improving cost effectiveness of solutions		



PART L 2010

Compliance and Complimentary Services

Renewable Energy Statements

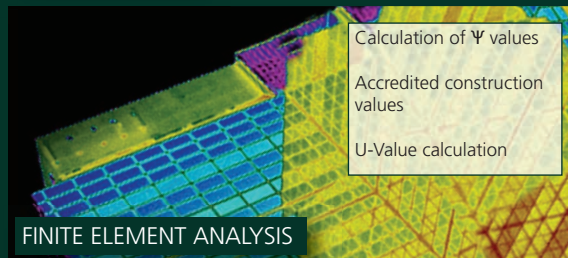
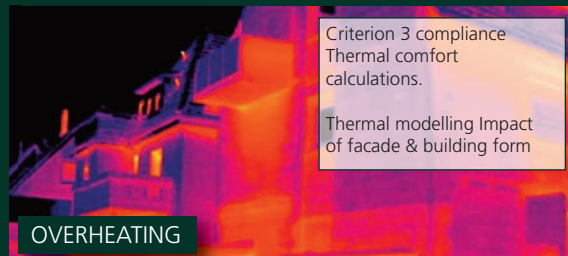
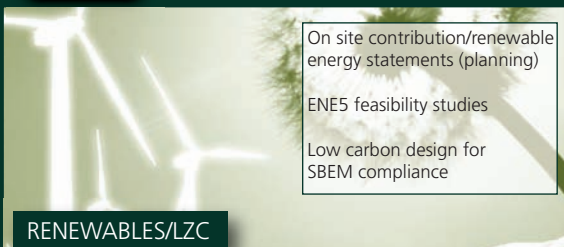
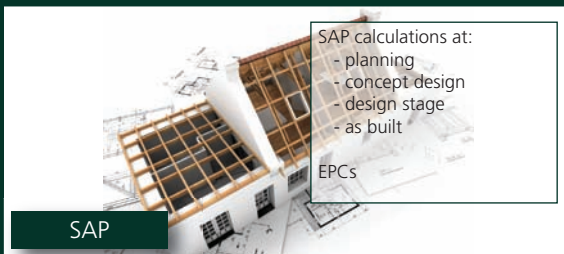
Code for Sustainable Homes
CSH/BREEAM

Overheating

SAP/SBEM

Air-tightness

Finite Element Analysis



Stroma is a multi-disciplinary construction services company

Collectively, the group adopts a co-ordinated approach to building sustainability and compliance, identifying and implementing the optimal planned or remedial measures for meeting energy performance targets and compliance requirements across the residential, commercial and public sectors