

## Colne Valley Refurbishment, Huddersfield

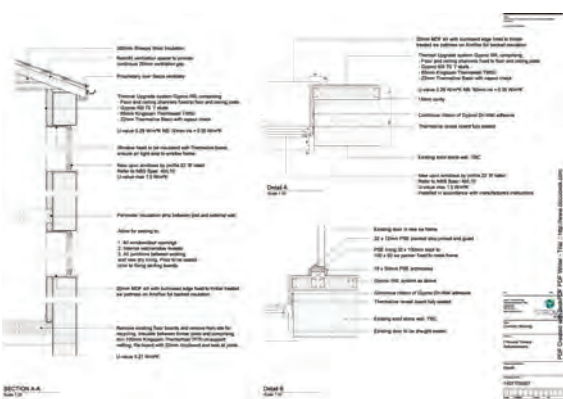


### CLIENTS REQUIREMENTS

The refurbishment of four existing three & four bedroom properties, including environmental performance upgrades. The client's focus is on user comfort and reducing energy bills and water use.

### STROMA DESIGN'S CONTRIBUTION

The refurbishment works present the opportunity to make substantial improvements to the environmental performance of the properties. The building fabric insulation, air tightness and the thermal performance of windows and doors were addressed first see how much the properties could be improved before considering renewables. Our agenda is to address performance, not compliance, and therefore pre and post air testing, dynamic simulation modelling and co-heat tests are proposed. Although these tests are not stipulated by legislation, our methodology aims to demonstrate, assess and build on credible test data.



|                  |   |
|------------------|---|
| <b>PROJECT</b>   | Colne Valley Refurbishment                              |
| <b>CLIENT</b>    | Connect Housing   |
| <b>VALUE</b>     | 130K  |
| <b>PROGRAMME</b> | Full architectural services<br>Currently RIBA stage F-G |

Stroma Design  
Pioneer Way  
Castleford  
WF10 5QU  
0845 621 11 11  
design@stroma.com  
www.stroma.com